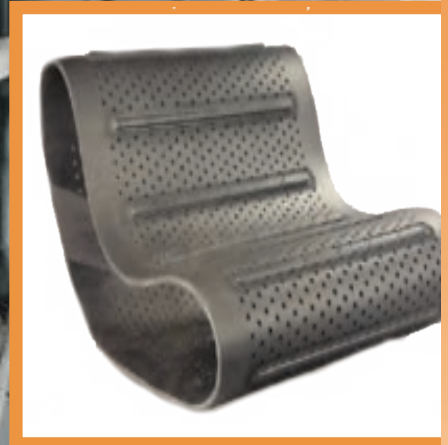


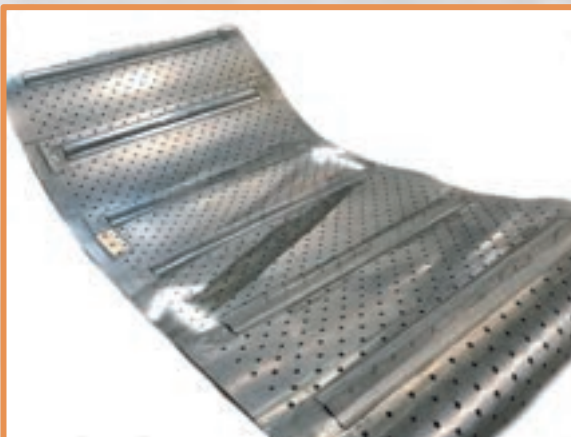
# ***SHOT BLAST TUMBLE BELTS***

## ***FOR THE ABRASIVE CLEANING INDUSTRY***



**BI-STATE RUBBER, INC.**  
**PHONE: 1-636-349-2388**  
**FAX: 1-636-349-2393**

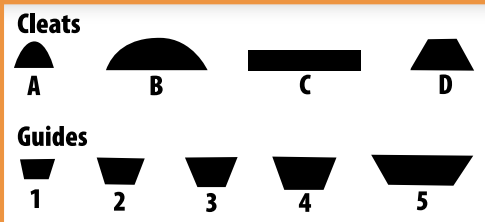
**[WWW.BISTATERUBBER.COM](http://WWW.BISTATERUBBER.COM)**



**Bi-State Rubber manufactures the highest quality shot blast tumble belts on the market. Belts are made to the industry standards of the OEM machines commonly used in the Metal finishing, automotive parts rebuilding, foundries, heat treating, forging, casting industry, metal fabrication and metal plating companies.**

- **Common 2, 3, and 4 ply belts with Grade 2 abrasion resistant belting. \*cross-rigid as well**
- **Common belt top cover thicknesses are 3/16", 1/4" and 3/8"**
- **Custom belt covers available in a premium Grade 1 high abrasion resistant compound to resist cover wear**
- **Highest quality splice materials used for the longest-lasting endless belt splice**
- **All blast belts are branded for easy identification**

**We offer a variety of hot vulcanized tracking guides and tumbling cleats. Guides are applied to the bottom to prevent side-to-side movement, while cleats are on top and help tumble products on the belt to create an efficient and durable product that fits your specific needs.**

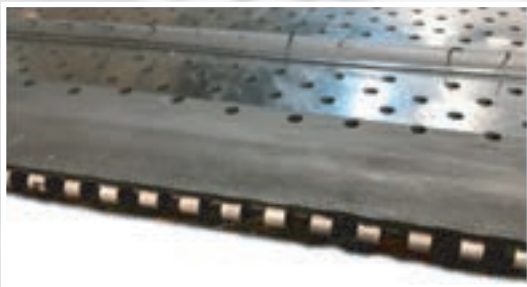




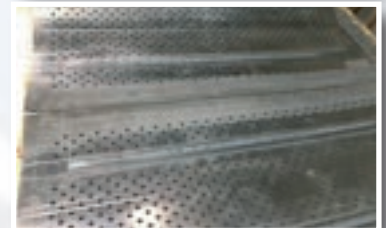
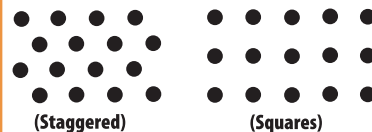


***Bi-State Rubber special designed hinge split belt for quicker installation of your blast machine belts. Made with a high grade rubber covered mechanical fastener and hinge pin when you need to have your machine up and running quickly.***

- ***Specially made to fit all of your OEM blast cabinet machines***
- ***Designed for a fast change out***
- ***Custom high abrasion and cut n gouge base belts available***
- ***Branded with the Bi-State Rubber logo for easy belt identification***



***Perforated drainage hole patterns***

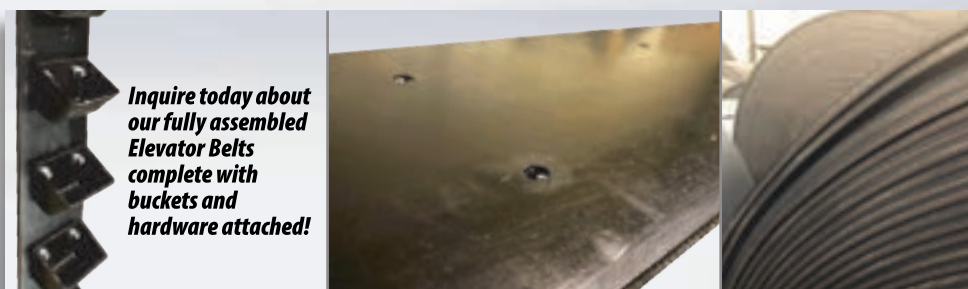


***Shot blast tumble belts have drainage holes that allow for complete removal of substances, ensuring a clean product. Hole patterns vary in shape and size depending on your needs and preferences. Shown here are two of the common drain hole patterns, staggered and square. Drain hole patterns available in 5/32", 3/16", 1/4", 5/16", 3/8", 1/2" (contact us for special requests)***

# Elevator Belting

**Replacement. Parts. Accessories.**

**Belting:** Bi-State Rubber offers multiple styles of replacement elevator belting in a multi-ply and single-ply carcass design for both rubber and PVC. Belting compounds range from standard **Gr-2, Fire Resistant, High Temp, and MOR**. Base belting tensions range from 120 PVC to over 1200 PIW for high capacity elevators. Belts will be custom punched to your bucket pattern. Fully assembled belts also available.



## **Buckets:**

Elevator Buckets are available in a wide variety of materials including fabricated steel, cast iron, nylon, and polyurethane.



**Accessories:** We offer all needed hardware for bucket replacement and splicing.

**Hardware:**



**Splices:**





### **BOOTS / CONNECTORS**

**CUSTOM MADE BOOTS / CONNECTORS IN VARIOUS MATERIALS INCLUDING GUM RUBBER, SBR, NEOPRENE, SILICONE TO NAME A FEW. OPTIONS OF FABRIC REINFORCED AS WELL.**

### **DUST COLLECTION HOSES**

**VARIOUS SIZES OF SHOT BLAST DUST COLLECTION HOSES.**

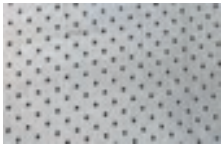


### **CUSTOM BELLOWS**

**CUSTOM BELLOWS IN VARIOUS MATERIALS. BOTH FULLY MOLDED AND SEWN STYLES, WITH OPTIONS OF COLLARS, FLANGES AND EVEN ZIPPERS INSTALLED FOR A QUICK CHANGE OUT.**

### **BRAIDED HOSES**

**VARIOUS SIZES OF BRAIDED HOSES AND MATERIALS INCLUDING STAINLESS STEEL.**



### **BLAST PADS**

**VARIOUS SIZES OF WEAR BLAST PADS. OPTION OF PRE-PUNCHED OR IN BULK SHEET ROLLS**

### **CLEATED BELTS**

**VARIOUS STYLE OF CLEATED BELTS, FLAT BELTS AND HIGH ANGLE POCKET BELTS**



### **CONVEYOR PULLEYS**

**VARIOUS STYLE OF CONVEYOR PULLEYS AND ROLLERS FOR BLAST MACHINES, ELEVATOR BELTS, ETC.**

### **FINGER SEALS**

**URETHANE SEALS AVAILABLE IN VARIOUS DUROMETERS**



## **INDUSTRIES SERVED**

**SAND, DIE, & INVESTMENT CASTING  
FOUNDRIES  
AUTOMOTIVE PARTS REBUILDING  
METAL FINISHING  
PEENING INDUSTRY**

**HEAT TREATING COMPANIES  
SPRING MANUFACTURING  
FABRICATION SHOPS  
METAL PLATING COMPANIES  
FORGING INDUSTRY**

**BI-STATE RUBBER, INC.**

**PHONE: 1+636-349-2388**

**FAX: 1+636-349-2393**

**WWW.BISTATERUBBER.COM**





## CONTACT US



1611 Headland Dr.  
Fenton, MO 63026



Phone: 800.859.2388  
Fax: 636.349.2393



Email: [sales@bistaterubber.com](mailto:sales@bistaterubber.com)

### THE BEGINNING

**WILLIAM D. FRANKE, WHO STARTED IN THE INDUSTRIAL RUBBER BELT MANUFACTURING INDUSTRY IN 1954, FOUNDED BI-STATE RUBBER, INC. IN 1970. SERVING MISSOURI AND CENTRAL ILLINOIS, THE ORIGINAL FOCUS OF THE COMPANY WAS THE SALE OF INDUSTRIAL RUBBER BELTS AND OTHER RUBBER PRODUCTS AND THE SERVICING OF CONVEYOR BELT SYSTEMS. AS CUSTOMERS' NEEDS CHANGED, SO DID BI-STATE RUBBER. TO ADDRESS THE GROWING AMOUNT OF SPECIALIZED NEEDS OF THEIR CUSTOMERS, BI-STATE RUBBER BEGAN MANUFACTURING CUSTOM INDUSTRIAL RUBBER CONVEYOR BELTING. DUE TO THE LEVEL OF COMMITMENT AND QUALITY OF SERVICE BI-STATE RUBBER'S BUSINESS GREW STEADILY.**

### TODAY

**TODAY BI-STATE RUBBER IS STILL IN THE FRANKE FAMILY, MANAGED AND OWNED BY WILLIAM D. FRANKE'S THREE SONS AND A GREAT TEAM OF EMPLOYEES. THE MANUFACTURING OF INDUSTRIAL RUBBER CONVEYOR BELTING, PARTICULARLY WEIGH FEEDER AND TUMBLE/BLAST BELTS, IS STILL THEIR PRIMARY FOCUS, BUT BI-STATE ALSO FABRICATES VARIOUS TYPES OF EXPANSION JOINTS AND OTHER PRODUCTS. WITH CUSTOMERS WORLD WIDE, BI-STATE RUBBER'S LARGEST CUSTOMER BASE IS THE POWER GENERATION, CEMENT, FOUNDRY, AND CASTING INDUSTRIES. HAVING MANY YEARS IN THE INDUSTRY, BI-STATE RUBBER'S MANAGEMENT DRAWS ON EXPERIENCE FROM ALL ASPECTS OF BELTING IN THE FIELD AND IN PRODUCTION. SIMPLY PUT...THEY KNOW HOW TO SERVE THEIR CUSTOMER'S NEEDS BEST.**

### WE CONVEY QUALITY

**THE BI-STATE RUBBER, INC. MOTTO DELCARES, NOT ONLY THAT THEIR PRODUCTS AND SERVICES ARE OF THE HIGHEST QUALITY, BUT IT ALSO SUGGESTS THE CUSTOMERS OF BI-STATE USE THEIR INDUSTRIAL RUBBER BELT MANUFACTURING SERVICES TO MOVE QUALITY PRODUCTS.**



**BI-STATE RUBBER, INC.**  
**PHONE: 1+636-349-2388**  
**FAX: 1+636-349-2393**



**LIKE US ON:**



**[WWW.BISTATERUBBER.COM](http://WWW.BISTATERUBBER.COM)**